

DECIBEL - Main Result

Calculation: lõunapoolne ala

Noise calculation model:

ISO 9613-2 General

Wind speed (at 10 m height):

10,0 m/s

Ground attenuation:

General, Ground factor: 0,5

Meteorological coefficient, CO:

Selected option: Fixed value: 0,0 dB

Type of demand in calculation:

1: WTG noise is compared to demand (DK, DE, SE, NL etc.)

Noise values in calculation:

All noise values are mean values (Lwa) (Normal)

Pure tones:

Fixed penalty added to source noise of WTGs with pure tones

Model: 5,0 dB(A)

Height above ground level, when no value in NSA object:

2,0 m; Don't allow override of model height with height from NSA object

Uncertainty margin:

0,0 dB; Uncertainty margin in NSA has priority

Deviation from "official" noise demands. Negative is more

restrictive, positive is less restrictive.:

0,0 dB(A)

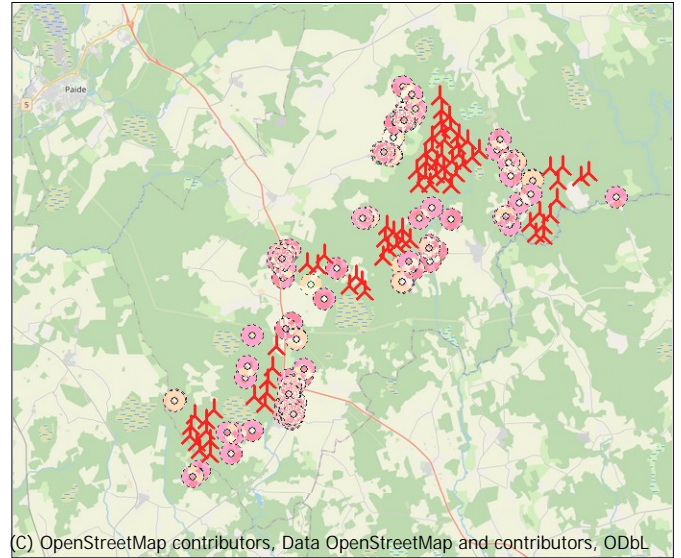
All coordinates are in

Estonian Lambert L-EST97-EST97 (EE)

WTGs

	East	North	Z	Row	data/Description	WTG type		Noise data							
						Valid	Manufact.	Type-generator	Power, rated [kW]	Rotor diameter [m]	Hub height [m]	Creator	Name	Wind speed [m/s]	LwA_ref [dB(A)]
1	609 890	6 528 002	80,0	TU5		Yes	Teoreetiline	-7 000	7 000	180,0	180,0	USER	108dB	10,0	108,0 h
1-1	616 150	6 523 446	80,0	1		Yes	Teoreetiline	-7 000	7 000	180,0	180,0	USER	108dB	10,0	108,0 h
1-11	615 076	6 521 574	70,0	11		Yes	Teoreetiline	-7 000	7 000	180,0	180,0	USER	108dB	10,0	108,0 h
1-13	615 272	6 522 696	75,9	13		Yes	Teoreetiline	-7 000	7 000	180,0	180,0	USER	108dB	10,0	108,0 h
1-14	614 761	6 522 139	71,5	14		Yes	Teoreetiline	-7 000	7 000	180,0	180,0	USER	108dB	10,0	108,0 h
1-15	615 861	6 522 626	77,7	15		Yes	Teoreetiline	-7 000	7 000	180,0	180,0	USER	108dB	10,0	108,0 h
1-16	617 804	6 524 941	80,0	16		Yes	Teoreetiline	-7 000	7 000	180,0	180,0	USER	108dB	10,0	108,0 h
1-2	616 418	6 525 179	80,0	2		Yes	Teoreetiline	-7 000	7 000	180,0	180,0	USER	108dB	10,0	108,0 h
1-3	616 184	6 524 452	80,0	3		Yes	Teoreetiline	-7 000	7 000	180,0	180,0	USER	108dB	10,0	108,0 h
1-4	615 729	6 525 083	80,0	4		Yes	Teoreetiline	-7 000	7 000	180,0	180,0	USER	108dB	10,0	108,0 h
1-5	617 399	6 524 656	80,0	5		Yes	Teoreetiline	-7 000	7 000	180,0	180,0	USER	108dB	10,0	108,0 h
1-8	615 481	6 522 065	72,8	8		Yes	Teoreetiline	-7 000	7 000	180,0	180,0	USER	108dB	10,0	108,0 h
1-9	615 537	6 521 482	70,0	9		Yes	Teoreetiline	-7 000	7 000	180,0	180,0	USER	108dB	10,0	108,0 h
10	609 196	6 525 234	74,1	TU5		Yes	Teoreetiline	-7 000	7 000	180,0	180,0	USER	108dB	10,0	108,0 h
11	609 096	6 525 709	75,0	TU5		Yes	Teoreetiline	-7 000	7 000	180,0	180,0	USER	108dB	10,0	108,0 h
12	609 749	6 525 244	73,9	TU5		Yes	Teoreetiline	-7 000	7 000	180,0	180,0	USER	108dB	10,0	108,0 h
13	610 162	6 524 409	71,7	TU5		Yes	Teoreetiline	-7 000	7 000	180,0	180,0	USER	108dB	10,0	108,0 h
14	609 461	6 526 580	77,6	TU5		Yes	Teoreetiline	-7 000	7 000	180,0	180,0	USER	108dB	10,0	108,0 h
15	609 953	6 526 898	78,7	TU5		Yes	Teoreetiline	-7 000	7 000	180,0	180,0	USER	108dB	10,0	108,0 h
16	610 420	6 527 083	79,5	TU5		Yes	Teoreetiline	-7 000	7 000	180,0	180,0	USER	108dB	10,0	108,0 h
17	610 843	6 526 696	78,5	TU5		Yes	Teoreetiline	-7 000	7 000	180,0	180,0	USER	108dB	10,0	108,0 h
18	611 318	6 526 435	78,0	TU5		Yes	Teoreetiline	-7 000	7 000	180,0	180,0	USER	108dB	10,0	108,0 h
19	611 600	6 525 576	75,6	TU5		Yes	Teoreetiline	-7 000	7 000	180,0	180,0	USER	108dB	10,0	108,0 h
2	609 434	6 524 101	71,0	TU5		Yes	Teoreetiline	-7 000	7 000	180,0	180,0	USER	108dB	10,0	108,0 h
20	610 938	6 525 708	75,7	TU5		Yes	Teoreetiline	-7 000	7 000	180,0	180,0	USER	108dB	10,0	108,0 h
21	609 503	6 525 957	75,8	TU5		Yes	Teoreetiline	-7 000	7 000	180,0	180,0	USER	108dB	10,0	108,0 h
22	610 117	6 526 419	77,4	TU5		Yes	Teoreetiline	-7 000	7 000	180,0	180,0	USER	108dB	10,0	108,0 h
23	609 978	6 525 639	75,1	TU5		Yes	Teoreetiline	-7 000	7 000	180,0	180,0	USER	108dB	10,0	108,0 h
24	610 793	6 526 155	77,0	TU5		Yes	Teoreetiline	-7 000	7 000	180,0	180,0	USER	108dB	10,0	108,0 h
25	610 589	6 525 343	74,5	TU5		Yes	Teoreetiline	-7 000	7 000	180,0	180,0	USER	108dB	10,0	108,0 h
26	610 092	6 524 921	73,1	TU5		Yes	Teoreetiline	-7 000	7 000	180,0	180,0	USER	108dB	10,0	108,0 h
27	610 772	6 524 673	72,7	TU5		Yes	Teoreetiline	-7 000	7 000	180,0	180,0	USER	108dB	10,0	108,0 h
28	610 527	6 524 033	70,7	TU5		Yes	Teoreetiline	-7 000	7 000	180,0	180,0	USER	108dB	10,0	108,0 h
29	611 128	6 525 175	74,3	TU5		Yes	Teoreetiline	-7 000	7 000	180,0	180,0	USER	108dB	10,0	108,0 h
3	609 822	6 528 681	80,0	TU5		Yes	Teoreetiline	-7 000	7 000	180,0	180,0	USER	108dB	10,0	108,0 h
30	611 971	6 525 936	76,8	TU5		Yes	Teoreetiline	-7 000	7 000	180,0	180,0	USER	108dB	10,0	108,0 h
3a-1	601 493	6 515 271	70,0	1		Yes	Teoreetiline	-7 000	7 000	180,0	180,0	USER	107 dB	10,0	107,0 h
3a-2	601 318	6 514 128	70,0	2		Yes	Teoreetiline	-7 000	7 000	180,0	180,0	USER	107 dB	10,0	107,0 h
3b-1	601 055	6 513 469	70,0	1		Yes	Teoreetiline	-7 000	7 000	180,0	180,0	USER	107 dB	10,0	107,0 h

To be continued on next page...



(C) OpenStreetMap contributors, Data OpenStreetMap and contributors, ODbL

DECIBEL - Main Result

Calculation: lõunapoolne ala

...continued from previous page

	East	North	Z	Row data/Description	WTG type			Power, rated [kW]	Rotor diameter [m]	Hub height [m]	Noise data		Wind speed [m/s]	LwA,ref [dB(A)]
					Valid	Manufact.	Type-generator				Creator	Name		
3b-2	600 391	6 512 551	70,0	2	Yes	Teoreetiline	-7 000	7 000	180,0	180,0	USER	107 dB	10,0	107,0 h
3b-3	600 965	6 512 150	70,0	3	Yes	Teoreetiline	-7 000	7 000	180,0	180,0	USER	107 dB	10,0	107,0 h
3b-4	601 042	6 512 799	70,0	4	Yes	Teoreetiline	-7 000	7 000	180,0	180,0	USER	107 dB	10,0	107,0 h
3c-1	597 074	6 510 906	66,8	1	Yes	Teoreetiline	-7 000	7 000	180,0	180,0	USER	107 dB	10,0	107,0 h
3c-10	596 988	6 510 387	65,8	10	Yes	Teoreetiline	-7 000	7 000	180,0	180,0	USER	107 dB	10,0	107,0 h
3c-2	597 532	6 509 592	63,4	2	Yes	Teoreetiline	-7 000	7 000	180,0	180,0	USER	107 dB	10,0	107,0 h
3c-3	598 135	6 509 441	62,2	3	Yes	Teoreetiline	-7 000	7 000	180,0	180,0	USER	107 dB	10,0	107,0 h
3c-4	597 233	6 511 483	67,7	4	Yes	Teoreetiline	-7 000	7 000	180,0	180,0	USER	107 dB	10,0	107,0 h
3c-5	598 280	6 511 768	67,2	5	Yes	Teoreetiline	-7 000	7 000	180,0	180,0	USER	107 dB	10,0	107,0 h
3c-6	598 088	6 510 181	63,8	6	Yes	Teoreetiline	-7 000	7 000	180,0	180,0	USER	107 dB	10,0	107,0 h
3c-7	597 851	6 511 221	66,3	7	Yes	Teoreetiline	-7 000	7 000	180,0	180,0	USER	107 dB	10,0	107,0 h
3c-8	597 851	6 510 649	65,1	8	Yes	Teoreetiline	-7 000	7 000	180,0	180,0	USER	107 dB	10,0	107,0 h
3c-9	597 352	6 510 046	64,6	9	Yes	Teoreetiline	-7 000	7 000	180,0	180,0	USER	107 dB	10,0	107,0 h
4	609 880	6 527 372	80,0	TU5	Yes	Teoreetiline	-7 000	7 000	180,0	180,0	USER	108dB	10,0	108,0 h
5	610 298	6 527 658	80,0	TU5	Yes	Teoreetiline	-7 000	7 000	180,0	180,0	USER	108dB	10,0	108,0 h
6	609 720	6 524 574	72,2	TU5	Yes	Teoreetiline	-7 000	7 000	180,0	180,0	USER	108dB	10,0	108,0 h
6-1	607 714	6 520 808	70,0	1	Yes	Teoreetiline	-7 000	7 000	180,0	180,0	USER	106dB	10,0	106,0 h
6-2	607 034	6 520 121	70,0	2	Yes	Teoreetiline	-7 000	7 000	180,0	180,0	USER	106dB	10,0	106,0 h
6-3	607 191	6 521 767	70,0	3	Yes	Teoreetiline	-7 000	7 000	180,0	180,0	USER	108dB	10,0	108,0 h
6-4	608 434	6 521 064	70,0	4	Yes	Teoreetiline	-7 000	7 000	180,0	180,0	USER	106dB	10,0	106,0 h
6-5	608 039	6 521 053	70,0	5	Yes	Teoreetiline	-7 000	7 000	180,0	180,0	USER	106dB	10,0	106,0 h
6-6	607 111	6 521 071	70,0	6	Yes	Teoreetiline	-7 000	7 000	180,0	180,0	USER	108dB	10,0	108,0 h
6-7	607 247	6 520 606	70,0	7	Yes	Teoreetiline	-7 000	7 000	180,0	180,0	USER	108dB	10,0	108,0 h
6-8	607 564	6 521 439	70,0	8	Yes	Teoreetiline	-7 000	7 000	180,0	180,0	USER	106dB	10,0	106,0 h
6-9	607 995	6 521 639	70,0	9	Yes	Teoreetiline	-7 000	7 000	180,0	180,0	USER	106dB	10,0	106,0 h
7	608 830	6 524 079	71,1	TU5	Yes	Teoreetiline	-7 000	7 000	180,0	180,0	USER	108dB	10,0	108,0 h
7-1	603 609	6 519 612	70,0	1	Yes	Teoreetiline	-7 000	7 000	180,0	180,0	USER	108dB	10,0	108,0 h
7-2	602 997	6 519 663	70,0	2	Yes	Teoreetiline	-7 000	7 000	180,0	180,0	USER	108dB	10,0	108,0 h
7-3	603 879	6 520 111	70,0	3	Yes	Teoreetiline	-7 000	7 000	180,0	180,0	USER	108dB	10,0	108,0 h
8	608 684	6 524 754	72,9	TU5	Yes	Teoreetiline	-7 000	7 000	180,0	180,0	USER	108dB	10,0	108,0 h
8-1	605 284	6 518 555	70,0	1	Yes	Teoreetiline	-7 000	7 000	180,0	180,0	USER	108dB	10,0	108,0 h
8-2	605 647	6 519 084	70,0	2	Yes	Teoreetiline	-7 000	7 000	180,0	180,0	USER	108dB	10,0	108,0 h
8-3	605 954	6 518 743	70,0	3	Yes	Teoreetiline	-7 000	7 000	180,0	180,0	USER	108dB	10,0	108,0 h
8-4	606 070	6 518 268	70,0	4	Yes	Teoreetiline	-7 000	7 000	180,0	180,0	USER	108dB	10,0	108,0 h
9	609 156	6 524 509	72,2	TU5	Yes	Teoreetiline	-7 000	7 000	180,0	180,0	USER	108dB	10,0	108,0 h

h) Generic octave distribution used

Calculation Results

Sound level

No.	Name	East	North	Z	Immission height [m]	Demands Noise [dB(A)]	Sound level		Demands fulfilled? Noise
							From WTGs [dB(A)]	Distance to noise demand [m]	
A	Mikutooma	607 293	6 525 531	75,3	2,0	40,0	37,8	420	Yes
B	Otsa	607 979	6 527 342	79,3	2,0	40,0	38,1	385	Yes
C	Kadastiku tee 1	601 989	6 511 659	69,3	2,0	40,0	35,7	476	Yes
D	Tiigi	601 751	6 520 115	70,0	2,0	40,0	34,3	652	Yes
E	Rätsepa	609 465	6 520 669	70,0	2,0	40,0	37,3	383	Yes
F	Kadaka	613 083	6 526 529	80,0	2,0	40,0	38,1	314	Yes
G	Simmuni	609 544	6 519 936	70,0	2,0	40,0	35,1	826	Yes
H	Harjaku	607 048	6 525 661	75,7	2,0	40,0	36,6	689	Yes
I	Mõmmimäe tee 2	602 531	6 512 074	70,0	2,0	40,0	33,9	831	Yes
J	Mihkle	607 400	6 526 434	77,6	2,0	40,0	37,2	576	Yes
K	Valgepea	602 560	6 515 640	70,0	2,0	40,0	34,5	568	Yes
L	Kikevere	601 987	6 516 146	70,0	2,0	40,0	35,1	452	Yes
M	Antsu tee 4	602 506	6 511 986	70,0	2,0	40,0	33,8	830	Yes
N	Uustalu-Metsa	607 940	6 527 394	79,5	2,0	40,0	37,8	442	Yes
O	Jõeäärse	619 319	6 523 652	80,0	2,0	40,0	32,1	1 235	Yes
P	Pargi	613 883	6 525 336	80,0	2,0	40,0	36,4	1 031	Yes
Q	H. Rebase tee 2	602 211	6 511 835	70,0	2,0	40,0	35,1	599	Yes
R	Sepa	608 442	6 527 647	80,0	2,0	40,0	39,5	85	Yes
S	Rukkilille	602 287	6 511 899	70,0	2,0	40,0	34,8	648	Yes
T	Roode	607 858	6 529 129	80,0	2,0	40,0	33,9	1 168	Yes

To be continued on next page...

DECIBEL - Main Result

Calculation: lõunapoolne ala

...continued from previous page

No.	Name	East	North	Z [m]	Immission height [m]	Demands Noise [dB(A)]	Sound level From WTGs [dB(A)]	Distance to noise demand [m]	Demands fulfilled ?	
									Noise	Noise
U	Hermani	601 898	6 520 211	70,0	2,0	40,0	35,0	551	Yes	
V	Uuesauna	599 405	6 510 513	64,3	2,0	40,0	37,3	453	Yes	
W	Tuljaku tee 1	602 422	6 511 497	68,8	2,0	40,0	33,0	933	Yes	
X	Tuljaku tee 5	602 384	6 511 458	68,6	2,0	40,0	33,0	918	Yes	
Y	Salu	599 233	6 509 475	61,6	2,0	40,0	37,2	347	Yes	
Z	Tuljaku tee 7	602 406	6 511 400	68,4	2,0	40,0	32,8	966	Yes	
AA	H. Rebase tee 6	602 104	6 511 890	70,0	2,0	40,0	35,9	479	Yes	
AB	Pika-Reinu	600 343	6 510 707	65,6	2,0	40,0	34,9	895	Yes	
AC	Viljandi mnt 11	602 364	6 511 897	70,0	2,0	40,0	34,4	721	Yes	
AD	Kiigevere tee 5/1	602 453	6 511 563	69,1	2,0	40,0	33,0	930	Yes	
AE	Antsu tee 15	602 471	6 511 858	70,0	2,0	40,0	33,7	835	Yes	
AF	Sandre	609 508	6 520 804	70,0	2,0	40,0	37,3	384	Yes	
AG	Nurme tee 2	602 204	6 512 118	70,0	2,0	40,0	35,9	504	Yes	
AH	Kamseni tee 1	602 321	6 511 982	70,0	2,0	40,0	34,8	654	Yes	
AI	Kingu	608 691	6 519 504	70,0	2,0	40,0	36,5	595	Yes	
AJ	Peetre	608 082	6 527 427	79,4	2,0	40,0	38,3	326	Yes	
AK	Neeme	610 566	6 522 230	70,0	2,0	40,0	36,9	711	Yes	
AL	Miku	605 915	6 522 165	70,0	2,0	40,0	37,1	456	Yes	
AM	Tänavotsa	607 269	6 525 601	75,5	2,0	40,0	37,6	460	Yes	
AN	Laane-Madise	609 539	6 522 773	70,0	2,0	40,0	39,8	39	Yes	
AO	Rehemetsa	602 073	6 520 373	70,0	2,0	40,0	35,6	479	Yes	
AP	Maeotsa/1	614 849	6 524 401	80,0	2,0	40,0	39,0	187	Yes	
AQ	Pärna	607 949	6 527 524	79,7	2,0	40,0	37,6	487	Yes	
AR	Toominga	606 963	6 525 611	75,6	2,0	40,0	36,3	760	Yes	
AS	Viljandi mnt 3	602 361	6 511 687	69,6	2,0	40,0	33,8	794	Yes	
AT	Maeotsa	614 838	6 524 436	80,0	2,0	40,0	39,0	191	Yes	
AU	Lillemäe	613 545	6 525 291	80,0	2,0	40,0	37,0	712	Yes	
AV	Mõisamaa	608 044	6 527 810	80,0	2,0	40,0	37,4	515	Yes	
AW	Reinu	601 475	6 519 738	70,0	2,0	40,0	33,0	856	Yes	
AX	Rendi	603 243	6 518 577	70,0	2,0	40,0	38,1	240	Yes	
AY	Hundiaugu	602 896	6 513 684	70,0	2,0	40,0	33,6	951	Yes	
AZ	Vana-Kubja	607 489	6 527 214	79,7	2,0	40,0	36,3	783	Yes	
BA	Uue-Kaasiku	613 690	6 524 608	79,3	2,0	40,0	36,6	1 090	Yes	
BB	Kangru	614 776	6 523 679	80,0	2,0	40,0	39,7	58	Yes	
BC	Teeääre	606 187	6 522 203	70,0	2,0	40,0	38,3	234	Yes	
BD	Kamseni tee 5	602 113	6 512 160	70,0	2,0	40,0	36,6	405	Yes	
BE	Viljandi mnt 9b	602 415	6 511 897	70,0	2,0	40,0	34,1	770	Yes	
BF	Kaare tee 7	602 611	6 512 222	70,0	2,0	40,0	33,8	874	Yes	
BG	Kodutare tee 1	602 467	6 512 061	70,0	2,0	40,0	34,2	773	Yes	
BH	Kodunurme tee 6	602 153	6 511 967	70,0	2,0	40,0	35,8	499	Yes	
BI	Loigu	601 617	6 519 931	70,0	2,0	40,0	33,7	736	Yes	
BJ	Väike-Nurga	606 845	6 525 658	75,8	2,0	40,0	35,8	885	Yes	
BK	Kaeramaa/1	608 093	6 519 684	70,0	2,0	40,0	39,3	110	Yes	
BL	Rendi/1	603 222	6 518 567	70,0	2,0	40,0	37,9	253	Yes	
BM	Soosalu	609 874	6 520 527	70,0	2,0	40,0	35,2	816	Yes	
BN	Hansualle	597 561	6 508 502	61,3	2,0	40,0	37,7	266	Yes	
BO	Lepametsa/1	596 194	6 512 216	70,0	2,0	40,0	35,8	535	Yes	
BP	Antsu tee 17	602 473	6 511 802	70,0	2,0	40,0	33,6	856	Yes	
BQ	Epa-Hansu	600 202	6 515 779	70,0	2,0	40,0	33,2	818	Yes	
BR	Sepa	601 754	6 520 305	70,0	2,0	40,0	33,9	721	Yes	
BS	Lombi	607 323	6 525 495	75,2	2,0	40,0	38,0	383	Yes	
BT	Viljandi mnt 9	602 352	6 511 828	70,0	2,0	40,0	34,3	733	Yes	
BU	Ellavere	608 567	6 528 014	80,0	2,0	40,0	39,4	108	Yes	
BV	H. Rebase tee 1	602 301	6 511 784	70,0	2,0	40,0	34,4	701	Yes	
BW	Tungla	608 306	6 528 771	80,0	2,0	40,0	36,4	619	Yes	
BX	Undiaugu	608 389	6 519 940	70,0	2,0	40,0	39,5	65	Yes	
BY	Haaviku	599 884	6 513 511	70,0	2,0	40,0	38,0	278	Yes	
BZ	Palsu-Nurga	613 668	6 522 004	70,0	2,0	40,0	38,1	262	Yes	
CA	Kaare tee 2	602 518	6 512 236	70,0	2,0	40,0	34,3	780	Yes	
CB	Raja (kukkuleppega)	604 568	6 519 443	70,0	2,0	45,0	41,1	511	Yes	
CC	Põllu	601 506	6 520 124	70,0	2,0	40,0	32,9	888	Yes	
CD	Viljandi mnt 7/1	602 347	6 511 797	70,0	2,0	40,0	34,2	739	Yes	
CE	Hansu	606 931	6 525 606	75,6	2,0	40,0	36,2	790	Yes	
CF	Sigapasma	606 803	6 525 556	75,5	2,0	40,0	35,7	903	Yes	

To be continued on next page...

DECIBEL - Main Result

Calculation: lõunapoolne ala

...continued from previous page

No.	Name	East	North	Z [m]	Immission height [m]	Demands Noise [dB(A)]	Sound level From WTGs [dB(A)]	Distance to noise demand [m]	Demands fulfilled ?	
									Noise	Noise
CG	Jaanimardi	606 918	6 525 665	75,8	2,0	40,0	36,1	816	Yes	
CH	Markuse-Uuetoa	614 199	6 523 196	75,6	2,0	40,0	39,1	158	Yes	
CI	Kodunurme tee 2	602 214	6 512 012	70,0	2,0	40,0	35,5	543	Yes	
CJ	Kadastiku tee 2	602 170	6 511 596	69,1	2,0	40,0	34,5	664	Yes	
CK	Sillaotsa	601 818	6 520 081	70,0	2,0	40,0	34,8	578	Yes	
CL	Palsu	613 481	6 522 446	71,0	2,0	40,0	37,2	475	Yes	
CM	Peetri	606 152	6 522 180	70,0	2,0	40,0	38,2	253	Yes	
CN	Vändra	608 366	6 527 634	80,0	2,0	40,0	39,2	149	Yes	
CO	Aru (kokkuleppega)	612 937	6 525 966	79,0	2,0	45,0	39,8	537	Yes	
CP	Papli	602 240	6 512 716	70,0	2,0	40,0	36,7	424	Yes	
CQ	Magasi-Aida	602 253	6 512 726	70,0	2,0	40,0	36,6	436	Yes	
CR	Viljandi mnt 15	602 366	6 512 040	70,0	2,0	40,0	34,7	681	Yes	
CS	Ellavere-Peetri	607 426	6 526 525	77,9	2,0	40,0	37,2	583	Yes	
CT	Sinsu/1	608 127	6 518 790	70,0	2,0	40,0	35,6	877	Yes	
CU	Sinsu	608 076	6 518 815	70,0	2,0	40,0	35,8	829	Yes	
CV	Umalasaare	602 284	6 516 467	70,0	2,0	40,0	32,8	881	Yes	
CW	Lehise	603 022	6 514 068	70,0	2,0	40,0	33,1	1 042	Yes	
CX	Kamseni tee 2	602 308	6 511 949	70,0	2,0	40,0	34,8	652	Yes	
CY	Lepametsa	596 155	6 512 201	70,0	2,0	40,0	35,6	556	Yes	
CZ	Timmu	599 996	6 514 134	70,0	2,0	40,0	36,7	470	Yes	
DA	Viljapuuai	607 950	6 527 828	80,0	2,0	40,0	37,0	608	Yes	
DB	Viljandi mnt 7	602 341	6 511 753	69,9	2,0	40,0	34,1	750	Yes	
DC	Kodunurme tee 8	602 110	6 511 967	70,0	2,0	40,0	36,1	458	Yes	
DD	Luha	607 296	6 525 491	75,2	2,0	40,0	37,9	408	Yes	
DE	H. Rebase tee 4	602 180	6 511 848	70,0	2,0	40,0	35,3	565	Yes	
DF	Jaama	613 868	6 525 413	80,0	2,0	40,0	36,4	1 002	Yes	
DG	Nurme	608 918	6 522 249	70,0	2,0	40,0	39,5	138	Yes	
DH	Kiigevere tee 5/2	602 413	6 511 585	69,2	2,0	40,0	33,3	885	Yes	
DI	Kiigevere tee 4	602 384	6 511 645	69,4	2,0	40,0	33,6	833	Yes	
DJ	Kiigevere tee 6	602 440	6 511 638	69,5	2,0	40,0	33,3	887	Yes	
DK	Kaeramaa	608 057	6 519 711	70,0	2,0	40,0	39,5	67	Yes	
DL	Paaristi	602 328	6 513 124	70,0	2,0	40,0	36,5	477	Yes	
DM	Kõrtsi	602 194	6 513 485	70,0	2,0	40,0	37,6	298	Yes	
DN	Palsu	613 386	6 522 420	70,7	2,0	40,0	36,8	564	Yes	
DO	Kamseni tee 6	602 075	6 512 122	70,0	2,0	40,0	36,7	378	Yes	
DP	Uuesauga	601 833	6 519 368	70,0	2,0	40,0	35,1	532	Yes	
DQ	Kiigevere tee 5	602 415	6 511 541	69,0	2,0	40,0	33,2	906	Yes	
DR	Kase	602 532	6 513 220	70,0	2,0	40,0	35,3	671	Yes	
DS	Kamseni tee 4	602 109	6 512 092	70,0	2,0	40,0	36,4	419	Yes	
DT	Kase	602 529	6 515 706	70,0	2,0	40,0	34,5	563	Yes	
DU	Nurme tee 4	602 241	6 512 143	70,0	2,0	40,0	35,7	533	Yes	
DV	Lõugu	607 023	6 525 638	75,7	2,0	40,0	36,5	708	Yes	
DW	Välja	604 000	6 517 802	70,0	2,0	40,0	35,8	703	Yes	
DX	Ristisaare	598 984	6 510 593	64,2	2,0	40,0	39,7	37	Yes	
DY	Kaasiku	601 739	6 518 864	70,0	2,0	40,0	33,5	814	Yes	
DZ	Korni	607 861	6 527 509	79,8	2,0	40,0	37,3	561	Yes	
EA	Kiigevere tee 8	602 482	6 511 632	69,5	2,0	40,0	33,1	927	Yes	
EB	Viljandi mnt 13	602 355	6 511 972	70,0	2,0	40,0	34,6	690	Yes	
EC	Kõrtsi	601 681	6 519 929	70,0	2,0	40,0	34,1	673	Yes	
ED	Kesa	597 264	6 508 194	61,2	2,0	40,0	35,1	635	Yes	

Distances (m)

NSA	WTG																					
	1	2	3	4	5	6	7	8	9	10	11	12	13	14	15	16	17	18	19	20	21	22
A	3584	2574	4038	3174	3681	2608	2114	1593	2124	1925	1811	2472	3080	2408	2990	3490	3735	4124	4306	3648	2250	2959
B	2021	3552	2277	1901	2340	3269	3371	2682	3067	2433	1978	2744	3655	1666	2023	2454	2935	3459	4028	3379	2059	2328
C	18148	14495	18733	17578	18023	15048	14175	14703	14709	15366	15740	15641	15140	16683	17190	17573	17445	17470	16908	16652	16148	16845
D	11330	8653	11766	10894	11396	9129	8111	8340	8608	9033	9230	9499	9441	10059	10640	11119	11221	11463	11258	10753	9704	10472
E	7343	3431	8018	6714	7036	3912	3468	4158	3851	4572	5052	4583	3803	5909	6246	6483	6181	6055	5350	5248	5287	5785
F	3515	4382	3906	3311	3004	3889	4907	4742	4415	4096	4069	3572	3608	3621	3151	2719	2246	1767	1762	2296	3624	2967
G	8071	4165	8747	7441	7756	4640	4203	4893	4588	5308	5788	5311	4514	6643	6972	7198	6882	6735	6001	5936	6019	6506
H	3681	2850	4099	3308	3813	2884	2382	1870	2402	2189	2048	2732	3355	2582	3156	3659	3932	4338	4551	3889	2472	3160
I	17541	13863	18132	16967	17407	14416	13553	14090	14086	14748	15129	15014	14501	16072	16574	16951	16815	16831	16260	16013	15531	16223
J	2942	3094	3303	2651	3145	2973	2754	2114	2605	2159	1844	2633	3424	2066	2594	3088	3452	3917	4286	3611	2156	2716

To be continued on next page...

DECIBEL - Main Result

Calculation: lõunapoolne ala

...continued from previous page

Table with 23 columns (NSA 1-22) and 23 rows (K-CG) containing numerical data representing decibel values for various locations.

To be continued on next page...



DECIBEL - Main Result

Calculation: lõunapoolne ala

...continued from previous page

Table with columns NSA, WTG, and 22 numbered columns. Rows include locations like CH, CI, CJ, CK, CL, CM, CN, CO, CP, CQ, CR, CS, CT, CU, CV, CW, CX, CY, CZ, DA, DB, DC, DD, DE, DF, DG, DH, DI, DJ, DK, DL, DM, DN, DO, DP, DQ, DR, DS, DT, DU, DV, DW, DX, DY, DZ, EA, EB, EC, ED, EW.

Table with columns NSA, WTG, and 22 numbered columns. Rows include locations like A, B, C, D, E, F, G, H, I, J, K, L, M, N, O, P, Q, R, S, T, U, V, W.

To be continued on next page...

DECIBEL - Main Result

Calculation: lõunapoolne ala

...continued from previous page

Table with columns: WTG, NSA, 23, 24, 25, 26, 27, 28, 29, 30, 1-1, 1-11, 1-13, 1-14, 1-15, 1-16, 1-2, 1-3, 1-4, 1-5, 1-8, 1-9, 3a-1, 3a-2. Rows include stations X through CT with numerical values.

To be continued on next page...



DECIBEL - Main Result

Calculation: lõunapoolne ala

...continued from previous page

Table with columns for WTG (WTG 23-30, 1-1, 1-11, 1-13, 1-14, 1-15, 1-16, 1-2, 1-3, 1-4, 1-5, 1-8, 1-9, 3a-1, 3a-2) and rows for stations NSA (CU to ED).

Table with columns for WTG (3b-1, 3b-2, 3b-3, 3b-4, 3c-1, 3c-10, 3c-2, 3c-3, 3c-4, 3c-5, 3c-6, 3c-7, 3c-8, 3c-9, 6-1, 6-2, 6-3, 6-4, 6-5, 6-6, 6-7, 6-8) and rows for stations NSA (A to AJ).

To be continued on next page...



DECIBEL - Main Result

Calculation: lõunapoolne ala

...continued from previous page

Table with columns for WTG (NSA to DG) and directional decibel values (3b-1 to 6-8). The table contains numerical data for each direction across all WTG locations.

To be continued on next page...



DECIBEL - Main Result

Calculation: lõunapoolne ala

...continued from previous page

NSA	WTG							
	6-9	7-1	7-2	7-3	8-1	8-2	8-3	8-4
AR	4103	6871	7147	6304	7251	6656	6940	7395
AS	11433	8020	7999	8557	7462	8092	7916	7552
AT	7390	12218	12763	11778	11216	10633	10549	10717
AU	6642	11441	11952	10963	10656	10042	10022	10254
AV	6169	9318	9581	8751	9655	9047	9302	9741
AW	6790	2137	1523	2432	3987	4222	4587	4823
AX	5652	1098	1113	1660	2041	2456	2715	2843
AY	9446	5969	5978	6500	5423	6059	5910	5574
AZ	5596	8533	8784	7965	8933	8334	8607	9055
BA	6421	11248	11778	10789	10356	9754	9705	9910
BB	7079	11881	12441	11463	10784	10217	10106	10248
BC	1893	3654	4077	3114	3757	3165	3467	3936
BD	11153	7599	7553	8143	7136	7772	7620	7276
BE	11224	7805	7786	8341	7248	7878	7705	7343
BF	10844	7455	7449	7988	6872	7502	7326	6964
BG	11056	7635	7618	8171	7077	7707	7535	7175
BH	11296	7780	7740	8323	7292	7926	7767	7417
BI	6601	2017	1405	2269	3916	4117	4496	4752
BJ	4179	6856	7122	6288	7270	6680	6970	7428
BK	1957	4483	5095	4234	3027	2518	2336	2469
BL	5675	1114	1119	1678	2061	2479	2737	2863
BM	2183	6330	6929	6008	4994	4465	4306	4423
BN	16772	12646	12411	13213	12674	13314	13237	12949
BO	15097	10470	10084	11015	11079	11681	11738	11580
BP	11278	7890	7876	8425	7313	7941	7763	7397
BQ	9748	5127	4784	5681	5789	6368	6469	6372
BR	6380	1980	1399	2133	3939	4079	4480	4771
BS	3913	6955	7259	6389	7231	6625	6887	7333
BT	11315	7883	7859	8420	7336	7967	7795	7434
BU	6399	9753	10035	9186	10010	9393	9629	10058
BV	11379	7934	7908	8473	7397	8028	7857	7498
BW	7137	10290	10539	9723	10651	10042	10297	10735
BX	1744	4790	5398	4512	3399	2872	2713	2858
BY	11480	7146	6893	7713	7387	8015	8011	7801
BZ	5683	10337	10922	9968	9063	8534	8373	8464
CA	10879	7454	7440	7990	6896	7527	7356	6998
CB	4069	974	1586	959	1140	1137	1552	1906
CC	6662	2164	1560	2372	4090	4268	4656	4926
CD	11344	7914	7891	8452	7367	7997	7825	7464
CE	4106	6851	7125	6284	7239	6645	6930	7386
CF	4093	6746	7013	6179	7162	6573	6864	7323
CG	4166	6896	7167	6329	7293	6701	6987	7443
CH	6395	11177	11743	10768	10048	9486	9368	9503
CI	11226	7725	7689	8266	7225	7859	7698	7347
CJ	11607	8142	8107	8682	7622	8254	8085	7726
CK	6369	1851	1251	2061	3786	3956	4346	4621
CL	5543	10268	10844	9879	9071	8523	8386	8505
CM	1920	3613	4035	3073	3726	3136	3442	3912
CN	6005	9324	9608	8757	9585	8969	9210	9641
CO	6567	11283	11767	10782	10650	10022	10044	10313
CP	10615	7029	6986	7572	6583	7220	7077	6743
CQ	10600	7016	6975	7560	6568	7205	7062	6727
CR	11125	7671	7647	8209	7137	7769	7601	7244
CS	4918	7895	8165	7327	8250	7649	7918	8365
CT	2851	4591	5202	4447	2852	2497	2173	2122
CU	2824	4536	5148	4391	2803	2443	2123	2079
CV	7703	3412	3274	3977	3654	4260	4317	4191
CW	9056	5573	5594	6102	5024	5660	5517	5188
CX	11232	7771	7743	8310	7243	7875	7708	7352
CY	15137	10508	10121	11053	11120	11722	11779	11621
CZ	10966	6560	6289	7126	6891	7510	7531	7345
DA	6187	9290	9547	8723	9646	9040	9299	9740
DB	11385	7958	7935	8496	7409	8040	7866	7505
DC	11319	7788	7745	8332	7311	7945	7788	7440
DD	3914	6938	7240	6372	7220	6614	6878	7324

To be continued on next page...

Project: Järva_tuulikud
Description: 25 m arvutusvõrk

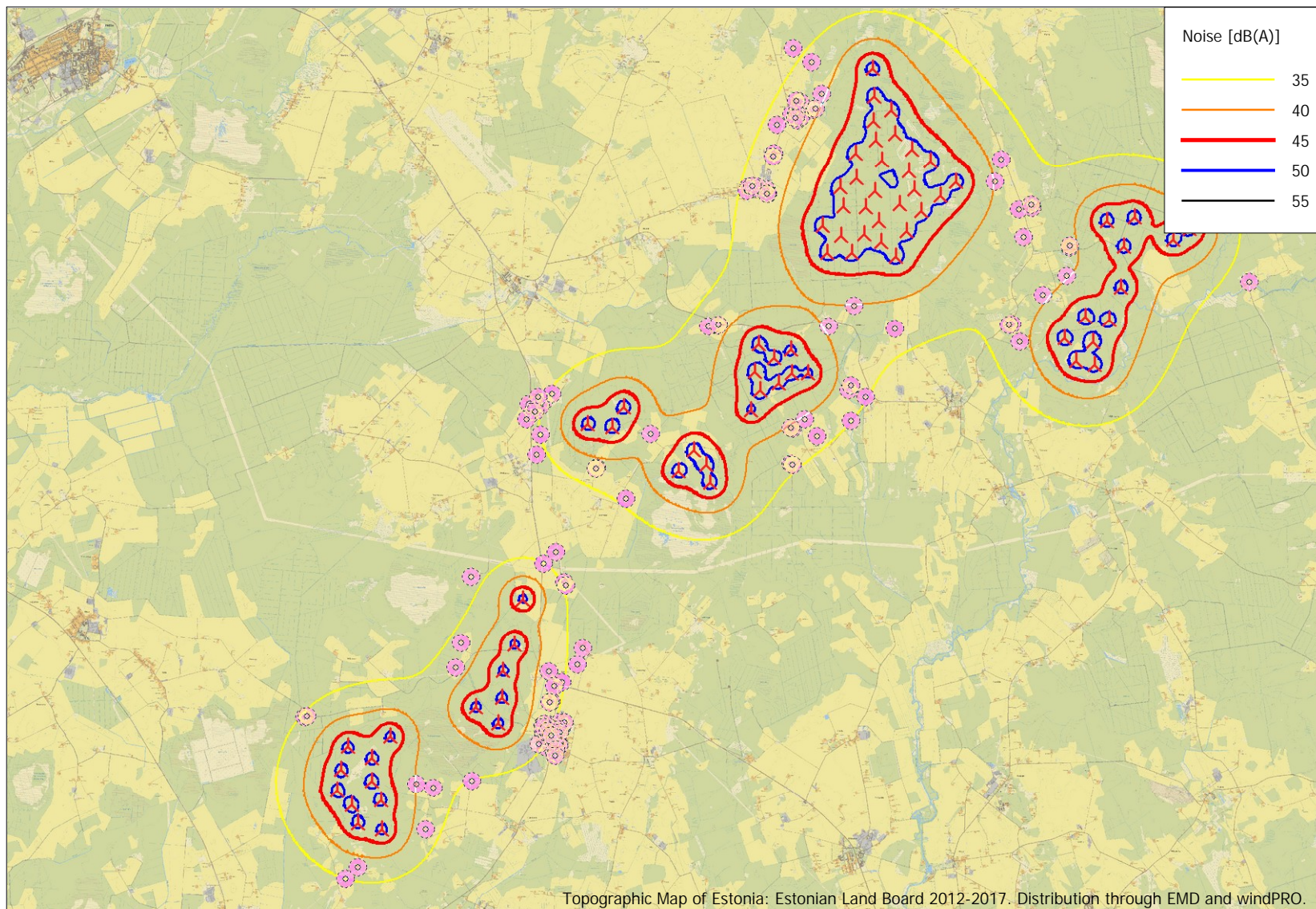
Licensed user:
Lemma OÜ
Värvi 5 - A308
EE-10621 Tallinn
+3725059914
Piret Toonpere / piret@lemma.ee
Calculated:
01.09.2024 23:03/4.0.547

DECIBEL - Main Result

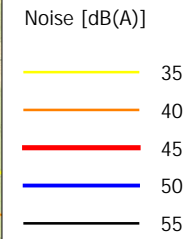
Calculation: lõunapoolne ala

...continued from previous page

WTG								
NSA	6-9	7-1	7-2	7-3	8-1	8-2	8-3	8-4
DE	11384	7892	7855	8434	7388	8021	7858	7505
DF	6979	11782	12295	11306	10984	10372	10347	10573
DG	1106	5926	6459	5472	5180	4550	4590	4893
DH	11496	8113	8097	8649	7536	8164	7984	7616
DI	11458	8058	8039	8595	7492	8121	7943	7578
DJ	11437	8057	8042	8592	7477	8105	7924	7557
DK	1928	4448	5059	4196	3003	2490	2314	2455
DL	10226	6611	6571	7155	6182	6820	6686	6359
DM	10004	6287	6228	6835	5936	6576	6462	6155
DN	5446	10169	10746	9781	8974	8425	8289	8410
DO	11205	7643	7595	8188	7187	7823	7672	7328
DP	6565	1792	1200	2176	3544	3824	4167	4376
DQ	11534	8157	8141	8692	7576	8204	8022	7654
DR	10033	6480	6458	7019	6001	6638	6495	6163
DS	11213	7666	7621	8210	7199	7834	7680	7335
DT	8065	4051	3983	4606	3962	4596	4576	4369
DU	11100	7591	7556	8132	7095	7730	7571	7221
DV	4114	6924	7203	6357	7291	6695	6975	7429
DW	5538	1851	2113	2312	1488	2087	2168	2121
DX	14251	10133	9915	10700	10150	10790	10721	10443
DY	6842	2014	1490	2476	3557	3913	4216	4371
DZ	5870	8966	9229	8399	9315	8709	8968	9410
EA	11422	8057	8045	8591	7466	8094	7911	7542
EB	11189	7740	7716	8278	7203	7835	7666	7308
EC	6540	1953	1342	2205	3855	4054	4433	4691
ED	17198	13059	12819	13626	13099	13739	13664	13377



Project:
Järva_tuulikud
 Description:
 25 m arvutusvõrk



Topographic Map of Estonia: Estonian Land Board 2012-2017. Distribution through EMD and windPRO.



Map: Estonian Topographic Map , Print scale 1:150 000, Map center Estonian Lambert L-EST97-EST97 (EE) East: 605 133 North: 6 519 180

New WTG

Noise sensitive area

Noise calculation model: ISO 9613-2 General. Wind speed: 10,0 m/s
 Height above sea level from active line object

DECIBEL -
Map 10,0 m/s
 Calculation:
 lõunapoolne ala

Licensed user:
 Lemma OÜ
 Värvi 5 - A308
 EE-10621 Tallinn
 +3725059914
 Piret Toonpere / piret@lemma.ee
 Calculated:
 01.09.2024 23:03/4.0.547