



## DECIBEL - Main Result

Calculation: Põhja\_ala\_TU10 ja TU11 107dB TU13 108 dB 01092024

...continued from previous page

No.	Name	East	North	Z [m]	Immission height [m]	Demands Noise [dB(A)]	Sound level From WTGs [dB(A)]	Demands fulfilled ? Noise
D	Vankri	605 615	6 558 384	104,1	2,0	40,0	38,0	Yes
E	Mõisa	612 286	6 555 711	110,0	2,0	40,0	38,3	Yes
F	Mäe tn 2	610 313	6 556 660	110,0	2,0	40,0	38,4	Yes
G	Liivaku	611 400	6 555 904	110,0	2,0	40,0	38,1	Yes
H	Undiaugu	610 754	6 561 053	110,0	2,0	40,0	37,8	Yes
I	Õunila	601 663	6 559 905	99,2	2,0	40,0	36,2	Yes
J	Ande	612 264	6 555 609	110,0	2,0	40,0	37,7	Yes
K	Saare	605 409	6 555 411	103,9	2,0	40,0	34,6	Yes
L	Pärtli	610 320	6 556 922	110,0	2,0	40,0	39,4	Yes
M	Rehepapi	611 462	6 560 968	110,0	2,0	40,0	35,9	Yes
N	Antsu	607 645	6 555 552	110,0	2,0	40,0	36,7	Yes
O	Veskimäe	608 838	6 561 245	109,9	2,0	40,0	37,0	Yes
P	Männi	609 770	6 557 804	110,0	2,0	40,0	39,5	Yes
Q	Jäära	610 505	6 555 871	110,0	2,0	40,0	36,0	Yes
R	Maarja	612 612	6 560 042	120,0	2,0	40,0	37,2	Yes
S	Karjala	604 584	6 559 659	100,0	2,0	40,0	38,4	Yes
T	Kännikese	603 980	6 561 528	100,0	2,0	40,0	36,9	Yes
U	Kährikutoa	611 388	6 561 181	110,0	2,0	40,0	35,3	Yes
V	Lageda	609 733	6 561 784	110,0	2,0	40,0	35,8	Yes
W	Ilumäe	610 264	6 556 551	110,0	2,0	40,0	37,9	Yes
X	Niidu	610 284	6 556 966	110,0	2,0	40,0	39,4	Yes
Y	Männimäe	609 727	6 557 839	110,0	2,0	40,0	39,5	Yes
Z	Lillelehe	604 064	6 562 018	100,0	2,0	40,0	33,8	Yes
AA	Endla	604 205	6 558 083	100,0	2,0	40,0	36,0	Yes
AB	Karukaevu	608 584	6 557 989	110,0	2,0	40,0	39,3	Yes
AC	Männaru	609 683	6 557 734	110,0	2,0	40,0	39,1	Yes
AD	Pödra	611 727	6 555 767	110,0	2,0	40,0	37,7	Yes
AE	Kääno	611 025	6 561 498	110,0	2,0	40,0	35,0	Yes
AF	Sepa/1	608 222	6 561 034	100,0	2,0	40,0	35,2	Yes
AG	Vana-Prediku	610 253	6 556 768	110,0	2,0	40,0	38,6	Yes
AH	Pärja	609 769	6 557 761	110,0	2,0	40,0	39,4	Yes
AI	Kalda	609 359	6 558 222	110,0	2,0	40,0	39,5	Yes
AJ	Topsu	608 479	6 560 291	102,1	2,0	40,0	38,8	Yes
AK	Lindala	609 384	6 561 735	110,0	2,0	40,0	35,8	Yes
AL	Alt-Sepa	609 793	6 562 030	110,0	2,0	40,0	34,3	Yes
AM	Kindela	608 750	6 561 087	108,7	2,0	40,0	37,4	Yes
AN	Jaama	612 014	6 559 932	114,6	2,0	40,0	38,9	Yes
AO	Kallaste	604 387	6 560 168	100,0	2,0	40,0	39,6	Yes
AP	Sireli	609 323	6 561 856	110,0	2,0	40,0	34,9	Yes
AQ	Tammiku	605 809	6 555 258	109,9	2,0	40,0	34,6	Yes
AR	Lüsingu	608 524	6 558 832	110,0	2,0	40,0	39,3	Yes
AS	Sinimäe	611 631	6 555 806	110,0	2,0	40,0	37,8	Yes
AT	Uueni	607 455	6 555 424	110,0	2,0	40,0	36,2	Yes
AU	Lille	610 009	6 557 245	110,0	2,0	40,0	39,0	Yes
AV	Uustalu	610 378	6 556 660	110,0	2,0	40,0	38,7	Yes
AW	Aleksandri	610 442	6 556 173	110,0	2,0	40,0	37,0	Yes
AX	Tooma	610 519	6 555 790	110,0	2,0	40,0	35,7	Yes
AY	Nõmme	608 702	6 557 544	110,0	2,0	40,0	39,0	Yes
AZ	Kübarsesepa	610 372	6 556 459	110,0	2,0	40,0	37,9	Yes
BA	Õobiku	605 645	6 558 149	102,3	2,0	40,0	38,9	Yes
BB	Vana-Prediku/1	610 225	6 556 777	110,0	2,0	40,0	38,5	Yes
BC	Sanglepa	614 912	6 557 119	120,0	2,0	40,0	34,7	Yes
BD	Koopa	607 502	6 559 342	108,5	2,0	40,0	37,9	Yes
BE	Kopliotsa	609 786	6 557 332	110,0	2,0	40,0	38,5	Yes
BF	Uuetoa	610 265	6 556 989	110,0	2,0	40,0	39,3	Yes
BG	Siili	612 119	6 559 816	115,6	2,0	40,0	39,3	Yes
BH	Kaevandi	609 584	6 557 876	110,0	2,0	40,0	39,2	Yes
BI	Lõugu	605 688	6 558 139	102,9	2,0	40,0	39,1	Yes
BJ	Kure	603 732	6 562 075	100,0	2,0	40,0	34,3	Yes
BK	Kasemetsa	601 904	6 560 221	100,0	2,0	40,0	37,6	Yes
BL	Tuuleveski	612 001	6 560 554	118,7	2,0	40,0	36,2	Yes
BM	Mäe tn 3	610 273	6 556 739	110,0	2,0	40,0	38,5	Yes
BN	Treieri	604 256	6 561 980	100,0	2,0	40,0	33,4	Yes
BO	Voki	610 827	6 561 357	110,0	2,0	40,0	36,1	Yes

To be continued on next page...



DECIBEL - Main Result

Calculation: Põhja\_ala\_TU10 ja TU11 107dB TU13 108 dB 01092024

...continued from previous page

Table with 24 columns (WTG) and rows labeled NSA through CB, containing numerical data for various parameters.

To be continued on next page...



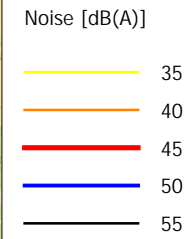
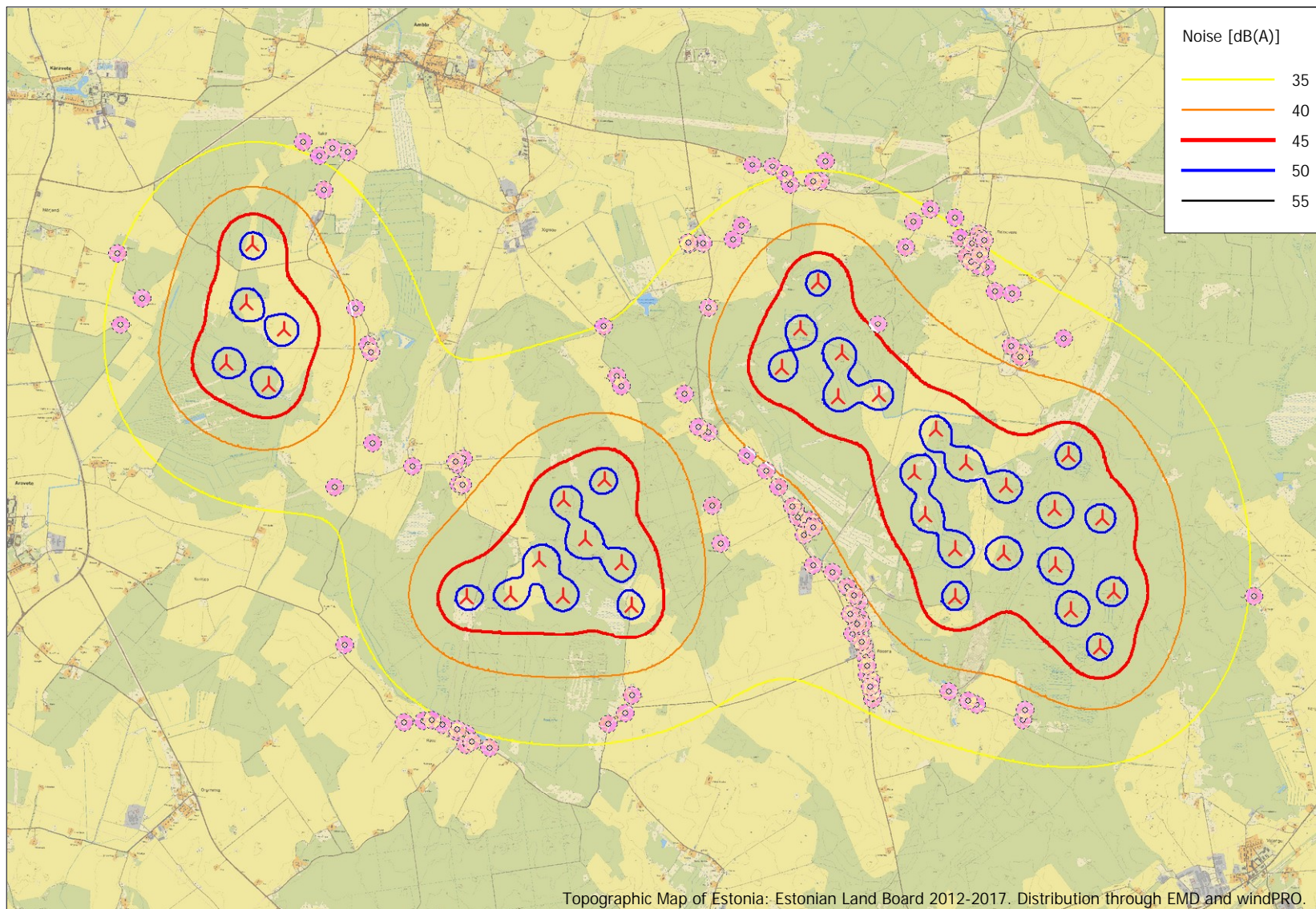


## DECIBEL - Main Result

Calculation: Põhja\_ala\_TU10 ja TU11 107dB TU13 108 dB 01092024

...continued from previous page

	WTG											13 (reserv)	21 (reserv)
NSA	25	26	27	28	29	30	31	32	33	34	35		
CP	2320	2818	3094	2632	1567	2676	4036	4527	4383	4483	3890	4696	2583
CQ	6221	6715	7151	6236	5611	5707	8451	8900	8615	8523	8190	3856	2299
CR	2821	3299	3522	3173	2075	3264	3949	4402	4166	4180	3709	5148	2836
CS	6155	6642	7088	6147	5567	5591	8505	8964	8702	8631	8265	3591	2205
CT	4797	5296	5725	4833	4179	4349	7106	7575	7341	7309	6889	3297	964
CU	2204	1708	1565	1996	2957	2497	4588	5047	5548	6130	5082	5989	5889
CV	2414	2923	3332	2519	1777	2221	5012	5527	5446	5584	4937	3577	1657
CW	4142	4647	4932	4407	3391	4291	5295	5698	5347	5217	4956	5045	2373
CX	4101	4301	4788	3707	4133	2914	7797	8345	8483	8783	7941	1378	3325
CY	3595	3911	4416	3303	3439	2518	7121	7665	7725	7964	7190	1252	2212
CZ	6358	6859	7284	6398	5727	5897	8453	8890	8580	8462	8168	4176	2486
DA	2173	1676	1536	1965	2926	2470	4569	5029	5528	6108	5060	5970	5860
DB	3039	3453	3947	2882	2692	2210	6293	6828	6824	7015	6298	2105	1404
DC	5426	5941	6274	5621	4695	5357	6742	7127	6733	6540	6372	5095	2510
DD	6117	6579	7050	6044	5599	5415	8770	9252	9046	9030	8584	2942	2213
DE	6359	6860	7283	6403	5722	5910	8425	8860	8545	8423	8136	4228	2500
DF	1502	1676	1584	2004	1336	2642	2352	2899	3055	3446	2513	6003	4495
DG	5346	5560	5405	5847	4909	6360	2718	2639	1913	1289	2058	8981	6633
DH	3098	3481	3982	2892	2821	2172	6466	7004	7027	7238	6497	1886	1655
DI	1830	1878	1649	2311	1802	3015	1925	2472	2711	3170	2178	6475	4999
DJ	1908	1838	2237	1404	2397	1035	5564	6096	6401	6844	5869	3905	4202
DK	6333	6833	7259	6370	5703	5867	8440	8878	8571	8456	8157	4140	2455
DL	6265	6764	7192	6298	5639	5791	8402	8843	8542	8433	8125	4053	2378
DM	6225	6723	7153	6254	5602	5743	8383	8827	8530	8426	8111	3994	2330



Project:  
**Järva\_tuulikud**  
 Description:  
 25 m arvutusvõrk

**DECIBEL -**  
**Map 10,0 m/s**  
 Calculation:  
 Pohja\_ala\_TU10 ja TU11 107dB TU13 108 dB 01092024

Topographic Map of Estonia: Estonian Land Board 2012-2017. Distribution through EMD and windPRO.



⚓ New WTG

Map: Estonian Topographic Map , Print scale 1:70 000, Map center Estonian Lambert L-EST97-EST97 (EE) East: 608 095 North: 6 558 668  
■ Noise sensitive area

Noise calculation model: ISO 9613-2 General. Wind speed: 10,0 m/s  
 Height above sea level from active line object

Licensed user:  
 Lemma OÜ  
 Värvil 5 - A308  
 EE-10621 Tallinn  
 +3725059914  
 Piret Toonpere / piret@lemma.ee  
 Calculated:  
 01.09.2024 14:51/4.0.547

