

DECIBEL - Main Result

Calculation: lõuna_ala_30042024

Noise calculation model:

ISO 9613-2 General

Wind speed (at 10 m height):

10,0 m/s

Ground attenuation:

General, Ground factor: 0,5

Meteorological coefficient, CO:

Selected option: Fixed value: 0,0 dB

Type of demand in calculation:

1: WTG noise is compared to demand (DK, DE, SE, NL etc.)

Noise values in calculation:

All noise values are mean values (Lwa) (Normal)

Pure tones:

Fixed penalty added to source noise of WTGs with pure tones

Model: 5,0 dB(A)

Height above ground level, when no value in NSA object:

2,0 m; Don't allow override of model height with height from NSA object

Uncertainty margin:

0,0 dB; Uncertainty margin in NSA has priority

Deviation from "official" noise demands. Negative is more restrictive, positive is less restrictive.:

0,0 dB(A)

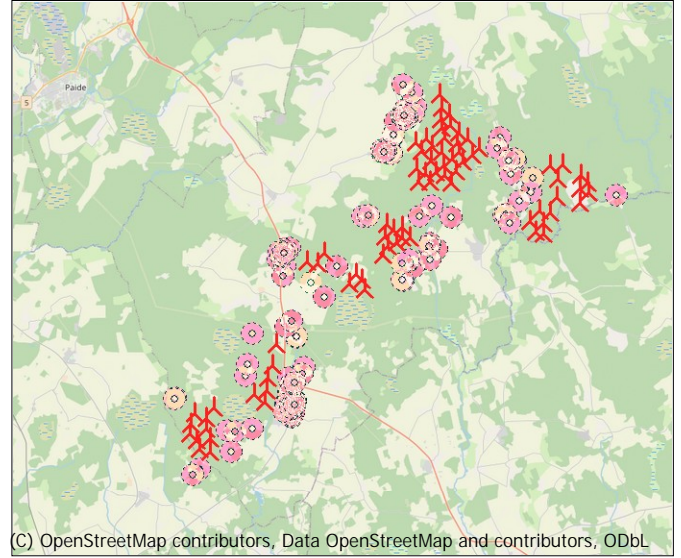
All coordinates are in

Estonian Lambert L-EST97-EST97 (EE)

WTGs

	East	North	Z	Row data/Description	WTG type		Power, rated [kW]	Rotor diameter [m]	Hub height [m]	Noise data		Wind speed [m/s]	LwA,ref [dB(A)]	
					Valid	Manufact.				Type-generator	Creator			Name
1	601 055	6 513 469	70,0	Ala3.2	Yes	VESTAS	V172-7.2-7 200	7 200	180,0	180,0	USER	Copy of Level 0 - Measured - PO7200_108dB	10,0	108,0 h
1	605 284	6 518 555	70,0	Ala8	Yes	VESTAS	V172-7.2-7 200	7 200	180,0	180,0	USER	Copy of Level 0 - Measured - PO7200_108dB	10,0	108,0 h
1	601 493	6 515 271	70,0	Ala3.1	Yes	VESTAS	V172-7.2-7 200	7 200	180,0	180,0	USER	Copy of Level 0 - Measured - PO7200_108dB	10,0	108,0 h
1	609 890	6 528 002	80,0	TU5	Yes	VESTAS	V172-7.2-7 200	7 200	180,0	180,0	USER	Copy of Level 0 - Measured - PO7200_108dB	10,0	108,0 h
1	597 074	6 510 906	66,8	Ala3.3	Yes	VESTAS	V172-7.2-7 200	7 200	180,0	180,0	USER	Copy of Level 0 - Measured - PO7200_107dB	10,0	107,0 h
1	603 609	6 519 612	70,0	Ala7	Yes	VESTAS	V172-7.2-7 200	7 200	180,0	180,0	USER	Copy of Level 0 - Measured - PO7200_108dB	10,0	108,0 h
1	607 714	6 520 808	70,0	Ala6	Yes	VESTAS	V172-7.2-7 200	7 200	180,0	180,0	USER	Copy of Level 0 - Measured - PO7200_106dB	10,0	106,0 h
1	616 150	6 523 446	80,0	Ala1	Yes	VESTAS	V172-7.2-7 200	7 200	180,0	180,0	USER	Copy of Level 0 - Measured - PO7200_108dB	10,0	108,0 h
2	600 374	6 512 572	70,0	Ala3.2	Yes	VESTAS	V172-7.2-7 200	7 200	180,0	180,0	USER	Copy of Level 0 - Measured - PO7200_108dB	10,0	108,0 h
2	597 531	6 509 554	63,3	Ala3.3	Yes	VESTAS	V172-7.2-7 200	7 200	180,0	180,0	USER	Copy of Level 0 - Measured - PO7200_107dB	10,0	107,0 h
2	609 434	6 524 101	71,0	TU5	Yes	VESTAS	V172-7.2-7 200	7 200	180,0	180,0	USER	Copy of Level 0 - Measured - PO7200_108dB	10,0	108,0 h
2	601 318	6 514 128	70,0	Ala3.1	Yes	VESTAS	V172-7.2-7 200	7 200	180,0	180,0	USER	Copy of Level 0 - Measured - PO7200_108dB	10,0	108,0 h
2	605 647	6 519 084	70,0	Ala8	Yes	VESTAS	V172-7.2-7 200	7 200	180,0	180,0	USER	Copy of Level 0 - Measured - PO7200_108dB	10,0	108,0 h
2	602 997	6 519 663	70,0	Ala7	Yes	VESTAS	V172-7.2-7 200	7 200	180,0	180,0	USER	Copy of Level 0 - Measured - PO7200_108dB	10,0	108,0 h
2	607 034	6 520 121	70,0	Ala6	Yes	VESTAS	V172-7.2-7 200	7 200	180,0	180,0	USER	Copy of Level 0 - Measured - PO7200_106dB	10,0	106,0 h
2	616 418	6 525 179	80,0	Ala1	Yes	VESTAS	V172-7.2-7 200	7 200	180,0	180,0	USER	Copy of Level 0 - Measured - PO7200_108dB	10,0	108,0 h
3	607 191	6 521 767	70,0	Ala6	Yes	VESTAS	V172-7.2-7 200	7 200	180,0	180,0	USER	Copy of Level 0 - Measured - PO7200_108dB	10,0	108,0 h
3	603 879	6 520 111	70,0	Ala7	Yes	VESTAS	V172-7.2-7 200	7 200	180,0	180,0	USER	Copy of Level 0 - Measured - PO7200_108dB	10,0	108,0 h
3	600 965	6 512 150	70,0	Ala3.2	Yes	VESTAS	V172-7.2-7 200	7 200	180,0	180,0	USER	Copy of Level 0 - Measured - PO7200_108dB	10,0	108,0 h
3	598 135	6 509 441	62,2	Ala3.3	Yes	VESTAS	V172-7.2-7 200	7 200	180,0	180,0	USER	Copy of Level 0 - Measured - PO7200_107dB	10,0	107,0 h
3	605 954	6 518 743	70,0	Ala8	Yes	VESTAS	V172-7.2-7 200	7 200	180,0	180,0	USER	Copy of Level 0 - Measured - PO7200_108dB	10,0	108,0 h
3	609 822	6 528 681	80,0	TU5	Yes	VESTAS	V172-7.2-7 200	7 200	180,0	180,0	USER	Copy of Level 0 - Measured - PO7200_108dB	10,0	108,0 h
3	616 184	6 524 452	80,0	Ala1	Yes	VESTAS	V172-7.2-7 200	7 200	180,0	180,0	USER	Copy of Level 0 - Measured - PO7200_108dB	10,0	108,0 h
4	615 724	6 525 083	80,0	Ala1	Yes	VESTAS	V172-7.2-7 200	7 200	180,0	180,0	USER	Copy of Level 0 - Measured - PO7200_108dB	10,0	108,0 h
4	601 042	6 512 799	70,0	Ala3.2	Yes	VESTAS	V172-7.2-7 200	7 200	180,0	180,0	USER	Copy of Level 0 - Measured - PO7200_108dB	10,0	108,0 h
4	609 880	6 527 372	80,0	TU5	Yes	VESTAS	V172-7.2-7 200	7 200	180,0	180,0	USER	Copy of Level 0 - Measured - PO7200_108dB	10,0	108,0 h
4	597 233	6 511 483	67,7	Ala3.3	Yes	VESTAS	V172-7.2-7 200	7 200	180,0	180,0	USER	Copy of Level 0 - Measured - PO7200_107dB	10,0	107,0 h
4	606 070	6 518 268	70,0	Ala8	Yes	VESTAS	V172-7.2-7 200	7 200	180,0	180,0	USER	Copy of Level 0 - Measured - PO7200_108dB	10,0	108,0 h
4	608 434	6 521 064	70,0	Ala6	Yes	VESTAS	V172-7.2-7 200	7 200	180,0	180,0	USER	Copy of Level 0 - Measured - PO7200_106dB	10,0	106,0 h
5	617 399	6 524 656	80,0	Ala1	Yes	VESTAS	V172-7.2-7 200	7 200	180,0	180,0	USER	Copy of Level 0 - Measured - PO7200_108dB	10,0	108,0 h
5	608 039	6 521 053	70,0	Ala6	Yes	VESTAS	V172-7.2-7 200	7 200	180,0	180,0	USER	Copy of Level 0 - Measured - PO7200_106dB	10,0	106,0 h
5	598 280	6 511 768	67,2	Ala3.3	Yes	VESTAS	V172-7.2-7 200	7 200	180,0	180,0	USER	Copy of Level 0 - Measured - PO7200_107dB	10,0	107,0 h
5	610 298	6 527 658	80,0	TU5	Yes	VESTAS	V172-7.2-7 200	7 200	180,0	180,0	USER	Copy of Level 0 - Measured - PO7200_108dB	10,0	108,0 h
6	607 111	6 521 071	70,0	Ala6	Yes	VESTAS	V172-7.2-7 200	7 200	180,0	180,0	USER	Copy of Level 0 - Measured - PO7200_108dB	10,0	108,0 h
6	598 088	6 510 181	63,8	Ala3.3	Yes	VESTAS	V172-7.2-7 200	7 200	180,0	180,0	USER	Copy of Level 0 - Measured - PO7200_107dB	10,0	107,0 h
6	609 720	6 524 574	72,2	TU5	Yes	VESTAS	V172-7.2-7 200	7 200	180,0	180,0	USER	Copy of Level 0 - Measured - PO7200_108dB	10,0	108,0 h
6	617 748	6 524 243	80,0	Ala1	Yes	VESTAS	V172-7.2-7 200	7 200	180,0	180,0	USER	Copy of Level 0 - Measured - PO7200_108dB	10,0	108,0 h
7	608 830	6 524 079	71,1	TU5	Yes	VESTAS	V172-7.2-7 200	7 200	180,0	180,0	USER	Copy of Level 0 - Measured - PO7200_108dB	10,0	108,0 h
7	597 851	6 511 221	66,3	Ala3.3	Yes	VESTAS	V172-7.2-7 200	7 200	180,0	180,0	USER	Copy of Level 0 - Measured - PO7200_107dB	10,0	107,0 h
7	607 247	6 520 606	70,0	Ala6	Yes	VESTAS	V172-7.2-7 200	7 200	180,0	180,0	USER	Copy of Level 0 - Measured - PO7200_108dB	10,0	108,0 h
7	617 824	6 523 771	80,0	Ala1	Yes	VESTAS	V172-7.2-7 200	7 200	180,0	180,0	USER	Copy of Level 0 - Measured - PO7200_108dB	10,0	108,0 h
8	597 851	6 510 649	65,1	Ala3.3	Yes	VESTAS	V172-7.2-7 200	7 200	180,0	180,0	USER	Copy of Level 0 - Measured - PO7200_107dB	10,0	107,0 h
8	607 564	6 521 439	70,0	Ala6	Yes	VESTAS	V172-7.2-7 200	7 200	180,0	180,0	USER	Copy of Level 0 - Measured - PO7200_106dB	10,0	106,0 h
8	608 684	6 524 754	72,9	TU5	Yes	VESTAS	V172-7.2-7 200	7 200	180,0	180,0	USER	Copy of Level 0 - Measured - PO7200_108dB	10,0	108,0 h
8	615 481	6 522 065	72,8	Ala1	Yes	VESTAS	V172-7.2-7 200	7 200	180,0	180,0	USER	Copy of Level 0 - Measured - PO7200_108dB	10,0	108,0 h
9	609 156	6 524 509	72,2	TU5	Yes	VESTAS	V172-7.2-7 200	7 200	180,0	180,0	USER	Copy of Level 0 - Measured - PO7200_108dB	10,0	108,0 h
9	615 537	6 521 482	70,0	Ala1	Yes	VESTAS	V172-7.2-7 200	7 200	180,0	180,0	USER	Copy of Level 0 - Measured - PO7200_108dB	10,0	108,0 h

To be continued on next page...



Scale 1:400 000
New WTG Noise sensitive area

DECIBEL - Main Result

Calculation: lõuna_ala_30042024

...continued from previous page

	East	North	Z	Row data/Description	WTG type			Noise data				Wind speed [m/s]	LwA,ref [dB(A)]	
					Valid	Manufact.	Type-generator	Power, rated [kW]	Rotor diameter [m]	Hub height [m]	Creator			Name
9	607 995	6 521 639	70,0	Ala6	Yes	VESTAS	V172-7.2-7 200	7 200	180,0	180,0	USER	Copy of Level 0 - Measured - PO7200_106dB	10,0	106,0 h
9	597 352	6 510 046	64,6	Ala3.3	Yes	VESTAS	V172-7.2-7 200	7 200	180,0	180,0	USER	Copy of Level 0 - Measured - PO7200_107dB	10,0	107,0 h
10	609 416	6 525 185	73,7	TU5	Yes	VESTAS	V172-7.2-7 200	7 200	180,0	180,0	USER	Copy of Level 0 - Measured - PO7200_108dB	10,0	108,0 h
10	617 391	6 523 183	80,0	Ala1	Yes	VESTAS	V172-7.2-7 200	7 200	180,0	180,0	USER	Copy of Level 0 - Measured - PO7200_108dB	10,0	108,0 h
10	596 988	6 510 387	65,8	Ala3.3	Yes	VESTAS	V172-7.2-7 200	7 200	180,0	180,0	USER	Copy of Level 0 - Measured - PO7200_107dB	10,0	107,0 h
11	608 886	6 525 688	75,3	TU5	Yes	VESTAS	V172-7.2-7 200	7 200	180,0	180,0	USER	Copy of Level 0 - Measured - PO7200_108dB	10,0	108,0 h
11	615 076	6 521 574	70,0	Ala1	Yes	VESTAS	V172-7.2-7 200	7 200	180,0	180,0	USER	Copy of Level 0 - Measured - PO7200_108dB	10,0	108,0 h
12	617 341	6 523 930	80,0	Ala1	Yes	VESTAS	V172-7.2-7 200	7 200	180,0	180,0	USER	Copy of Level 0 - Measured - PO7200_108dB	10,0	108,0 h
12	608 556	6 526 102	76,4	TU5	Yes	VESTAS	V172-7.2-7 200	7 200	180,0	180,0	USER	Copy of Level 0 - Measured - PO7200_108dB	10,0	108,0 h
13	615 272	6 522 696	75,9	Ala1	Yes	VESTAS	V172-7.2-7 200	7 200	180,0	180,0	USER	Copy of Level 0 - Measured - PO7200_108dB	10,0	108,0 h
13	610 162	6 524 409	71,7	TU5	Yes	VESTAS	V172-7.2-7 200	7 200	180,0	180,0	USER	Copy of Level 0 - Measured - PO7200_108dB	10,0	108,0 h
14	609 142	6 526 379	76,9	TU5	Yes	VESTAS	V172-7.2-7 200	7 200	180,0	180,0	USER	Copy of Level 0 - Measured - PO7200_108dB	10,0	108,0 h
14	614 761	6 522 139	71,5	Ala1	Yes	VESTAS	V172-7.2-7 200	7 200	180,0	180,0	USER	Copy of Level 0 - Measured - PO7200_108dB	10,0	108,0 h
15	615 861	6 522 626	77,7	Ala1	Yes	VESTAS	V172-7.2-7 200	7 200	180,0	180,0	USER	Copy of Level 0 - Measured - PO7200_108dB	10,0	108,0 h
15	609 953	6 526 898	78,7	TU5	Yes	VESTAS	V172-7.2-7 200	7 200	180,0	180,0	USER	Copy of Level 0 - Measured - PO7200_108dB	10,0	108,0 h
16	610 420	6 527 083	79,5	TU5	Yes	VESTAS	V172-7.2-7 200	7 200	180,0	180,0	USER	Copy of Level 0 - Measured - PO7200_108dB	10,0	108,0 h
17	610 843	6 526 696	78,5	TU5	Yes	VESTAS	V172-7.2-7 200	7 200	180,0	180,0	USER	Copy of Level 0 - Measured - PO7200_108dB	10,0	108,0 h
18	611 318	6 526 435	78,0	TU5	Yes	VESTAS	V172-7.2-7 200	7 200	180,0	180,0	USER	Copy of Level 0 - Measured - PO7200_108dB	10,0	108,0 h
19	611 600	6 525 576	75,6	TU5	Yes	VESTAS	V172-7.2-7 200	7 200	180,0	180,0	USER	Copy of Level 0 - Measured - PO7200_108dB	10,0	108,0 h
20	610 938	6 525 708	75,7	TU5	Yes	VESTAS	V172-7.2-7 200	7 200	180,0	180,0	USER	Copy of Level 0 - Measured - PO7200_108dB	10,0	108,0 h
21	609 503	6 525 957	75,8	TU5	Yes	VESTAS	V172-7.2-7 200	7 200	180,0	180,0	USER	Copy of Level 0 - Measured - PO7200_108dB	10,0	108,0 h
22	610 117	6 526 419	77,4	TU5	Yes	VESTAS	V172-7.2-7 200	7 200	180,0	180,0	USER	Copy of Level 0 - Measured - PO7200_108dB	10,0	108,0 h
23	609 978	6 525 639	75,1	TU5	Yes	VESTAS	V172-7.2-7 200	7 200	180,0	180,0	USER	Copy of Level 0 - Measured - PO7200_108dB	10,0	108,0 h
24	610 793	6 526 155	77,0	TU5	Yes	VESTAS	V172-7.2-7 200	7 200	180,0	180,0	USER	Copy of Level 0 - Measured - PO7200_108dB	10,0	108,0 h
25	610 589	6 525 343	74,5	TU5	Yes	VESTAS	V172-7.2-7 200	7 200	180,0	180,0	USER	Copy of Level 0 - Measured - PO7200_108dB	10,0	108,0 h
26	610 092	6 524 921	73,1	TU5	Yes	VESTAS	V172-7.2-7 200	7 200	180,0	180,0	USER	Copy of Level 0 - Measured - PO7200_108dB	10,0	108,0 h
27	610 772	6 524 673	72,7	TU5	Yes	VESTAS	V172-7.2-7 200	7 200	180,0	180,0	USER	Copy of Level 0 - Measured - PO7200_108dB	10,0	108,0 h
28	610 527	6 524 033	70,7	TU5	Yes	VESTAS	V172-7.2-7 200	7 200	180,0	180,0	USER	Copy of Level 0 - Measured - PO7200_108dB	10,0	108,0 h
29	611 128	6 525 175	74,3	TU5	Yes	VESTAS	V172-7.2-7 200	7 200	180,0	180,0	USER	Copy of Level 0 - Measured - PO7200_108dB	10,0	108,0 h
30	611 971	6 525 936	76,8	TU5	Yes	VESTAS	V172-7.2-7 200	7 200	180,0	180,0	USER	Copy of Level 0 - Measured - PO7200_108dB	10,0	108,0 h

h) Generic octave distribution used

Calculation Results

Sound level

No.	Name	East	North	Z	Immission height [m]	Demands Noise [dB(A)]	Sound level		Demands fulfilled? Noise
							From WTGs [dB(A)]	Distance to noise demand [m]	
A	Mikutooma	607 293	6 525 531	75,3	2,0	40,0	38,6	254	Yes
B	Otsa	607 979	6 527 342	79,3	2,0	40,0	38,9	211	Yes
C	Kadastiku tee 1	601 989	6 511 659	69,3	2,0	40,0	36,6	391	Yes
D	Tiigi	601 751	6 520 115	70,0	2,0	40,0	34,3	651	Yes
E	Rätsepa	609 465	6 520 669	70,0	2,0	40,0	37,3	382	Yes
F	Kadaka	613 083	6 526 529	80,0	2,0	40,0	38,1	315	Yes
G	Simmuni	609 544	6 519 936	70,0	2,0	40,0	35,1	826	Yes
H	Harjaku	607 048	6 525 661	75,7	2,0	40,0	37,4	497	Yes
I	Mõmmimäe tee 2	602 531	6 512 074	70,0	2,0	40,0	34,8	733	Yes
J	Mihkle	607 400	6 526 434	77,6	2,0	40,0	38,5	240	Yes
K	Valgepea	602 560	6 515 640	70,0	2,0	40,0	35,3	498	Yes
L	Kikevere	601 987	6 516 146	70,0	2,0	40,0	35,9	386	Yes
M	Antsu tee 4	602 506	6 511 986	70,0	2,0	40,0	34,7	734	Yes
N	Uustalu-Metsa	607 940	6 527 394	79,5	2,0	40,0	38,5	274	Yes
O	Jõeäärse	619 319	6 523 652	80,0	2,0	40,0	35,7	607	Yes
P	Pargi	613 883	6 525 336	80,0	2,0	40,0	36,6	1 031	Yes
Q	H. Rebase tee 2	602 211	6 511 835	70,0	2,0	40,0	35,9	509	Yes
R	Sepa	608 442	6 527 647	80,0	2,0	40,0	39,9	21	Yes
S	Rukkilille	602 287	6 511 899	70,0	2,0	40,0	35,7	555	Yes
T	Roode	607 858	6 529 129	80,0	2,0	40,0	34,0	1 164	Yes
U	Hermani	601 898	6 520 211	70,0	2,0	40,0	35,0	550	Yes
V	Uuesauna	599 405	6 510 513	64,3	2,0	40,0	37,4	446	Yes
W	Tuljaku tee 1	602 422	6 511 497	68,8	2,0	40,0	33,8	847	Yes
X	Tuljaku tee 5	602 384	6 511 458	68,6	2,0	40,0	33,9	833	Yes
Y	Salu	599 233	6 509 475	61,6	2,0	40,0	37,3	344	Yes
Z	Tuljaku tee 7	602 406	6 511 400	68,4	2,0	40,0	33,6	882	Yes
AA	H. Rebase tee 6	602 104	6 511 890	70,0	2,0	40,0	36,8	389	Yes
AB	Pika-Reinu	600 343	6 510 707	65,6	2,0	40,0	35,4	810	Yes
AC	Viljandi mnt 11	602 364	6 511 897	70,0	2,0	40,0	35,3	628	Yes
AD	Kiigevere tee 5/1	602 453	6 511 563	69,1	2,0	40,0	33,9	843	Yes
AE	Antsu tee 15	602 471	6 511 858	70,0	2,0	40,0	34,6	742	Yes

To be continued on next page...

DECIBEL - Main Result

Calculation: lõuna_ala_30042024

...continued from previous page

No.	Name	East	North	Z [m]	Immission height [m]	Demands Noise [dB(A)]	Sound level From WTGs [dB(A)]	Distance to noise demand [m]	Demands fulfilled ?	
									Noise	Noise
AF	Sandre	609 508	6 520 804	70,0	2,0	40,0	37,3	384	Yes	
AG	Nurme tee 2	602 204	6 512 118	70,0	2,0	40,0	36,8	406	Yes	
AH	Kamseni tee 1	602 321	6 511 982	70,0	2,0	40,0	35,7	559	Yes	
AI	Kingu	608 691	6 519 504	70,0	2,0	40,0	36,5	594	Yes	
AJ	Peetre	608 082	6 527 427	79,4	2,0	40,0	39,0	185	Yes	
AK	Neeme	610 566	6 522 230	70,0	2,0	40,0	36,8	720	Yes	
AL	Miku	605 915	6 522 165	70,0	2,0	40,0	37,2	455	Yes	
AM	Tänavotsa	607 269	6 525 601	75,5	2,0	40,0	38,5	277	Yes	
AN	Laane-Madise	609 539	6 522 773	70,0	2,0	40,0	39,8	49	Yes	
AO	Rehemetsa	602 073	6 520 373	70,0	2,0	40,0	35,6	478	Yes	
AP	Mäeotsa/1	614 849	6 524 401	80,0	2,0	40,0	39,3	138	Yes	
AQ	Pärna	607 949	6 527 524	79,7	2,0	40,0	38,2	349	Yes	
AR	Toominga	606 963	6 525 611	75,6	2,0	40,0	37,0	582	Yes	
AS	Viljandi mnt 3	602 361	6 511 687	69,6	2,0	40,0	34,7	706	Yes	
AT	Mäeotsa	614 838	6 524 436	80,0	2,0	40,0	39,3	143	Yes	
AU	Lillemäe	613 545	6 525 291	80,0	2,0	40,0	37,0	713	Yes	
AV	Mõisamaa	608 044	6 527 810	80,0	2,0	40,0	37,8	444	Yes	
AW	Reinu	601 475	6 519 738	70,0	2,0	40,0	33,1	855	Yes	
AX	Rendi	603 243	6 518 577	70,0	2,0	40,0	38,1	238	Yes	
AY	Hundiaugu	602 896	6 513 684	70,0	2,0	40,0	34,5	848	Yes	
AZ	Vana-Kubja	607 489	6 527 214	79,7	2,0	40,0	37,2	519	Yes	
BA	Uue-Kaasiku	613 690	6 524 608	79,3	2,0	40,0	36,7	1 091	Yes	
BB	Kangru	614 776	6 523 679	80,0	2,0	40,0	40,0	9	Yes	
BC	Teeääre	606 187	6 522 203	70,0	2,0	40,0	38,4	233	Yes	
BD	Kamseni tee 5	602 113	6 512 160	70,0	2,0	40,0	37,5	307	Yes	
BE	Viljandi mnt 9b	602 415	6 511 897	70,0	2,0	40,0	35,0	676	Yes	
BF	Kaare tee 7	602 611	6 512 222	70,0	2,0	40,0	34,6	773	Yes	
BG	Kodutare tee 1	602 467	6 512 061	70,0	2,0	40,0	35,1	675	Yes	
BH	Kodunurme tee 6	602 153	6 511 967	70,0	2,0	40,0	36,7	406	Yes	
BI	Loigu	601 617	6 519 931	70,0	2,0	40,0	33,8	735	Yes	
BJ	Väike-Nurga	606 845	6 525 658	75,8	2,0	40,0	36,5	700	Yes	
BK	Kaeramaa/1	608 093	6 519 684	70,0	2,0	40,0	39,3	109	Yes	
BL	Rendi/1	603 222	6 518 567	70,0	2,0	40,0	38,0	252	Yes	
BM	Soosalu	609 874	6 520 527	70,0	2,0	40,0	35,3	815	Yes	
BN	Hansualle	597 561	6 508 502	61,3	2,0	40,0	37,8	248	Yes	
BO	Lepametsa/1	596 194	6 512 216	70,0	2,0	40,0	35,8	533	Yes	
BP	Antsu tee 17	602 473	6 511 802	70,0	2,0	40,0	34,4	764	Yes	
BQ	Epa-Hansu	600 202	6 515 779	70,0	2,0	40,0	34,0	745	Yes	
BR	Sepa	601 754	6 520 305	70,0	2,0	40,0	34,0	720	Yes	
BS	Lombi	607 323	6 525 495	75,2	2,0	40,0	38,8	225	Yes	
BT	Viljandi mnt 9	602 352	6 511 828	70,0	2,0	40,0	35,1	642	Yes	
BU	Ellavere	608 567	6 528 014	80,0	2,0	40,0	39,5	85	Yes	
BV	H. Rebase tee 1	602 301	6 511 784	70,0	2,0	40,0	35,3	611	Yes	
BW	Tungla	608 306	6 528 771	80,0	2,0	40,0	36,5	613	Yes	
BX	Undiaugu	608 389	6 519 940	70,0	2,0	40,0	39,6	64	Yes	
BY	Haaviku	599 884	6 513 511	70,0	2,0	40,0	39,0	144	Yes	
BZ	Palsu-Nurga	613 668	6 522 004	70,0	2,0	40,0	38,2	253	Yes	
CA	Kaare tee 2	602 518	6 512 236	70,0	2,0	40,0	35,2	679	Yes	
CB	Raja (kokkuleppega)	604 568	6 519 443	70,0	2,0	45,0	41,1	511	Yes	
CC	Põllu	601 506	6 520 124	70,0	2,0	40,0	32,9	888	Yes	
CD	Viljandi mnt 7/1	602 347	6 511 797	70,0	2,0	40,0	35,1	649	Yes	
CE	Hansu	606 931	6 525 606	75,6	2,0	40,0	36,8	615	Yes	
CF	Sigapasma	606 803	6 525 556	75,5	2,0	40,0	36,3	743	Yes	
CG	Jaanimardi	606 918	6 525 665	75,8	2,0	40,0	36,8	627	Yes	
CH	Markuse-Uuetoa	614 199	6 523 196	75,6	2,0	40,0	39,2	136	Yes	
CI	Kodunurme tee 2	602 214	6 512 012	70,0	2,0	40,0	36,4	448	Yes	
CJ	Kadastiku tee 2	602 170	6 511 596	69,1	2,0	40,0	35,4	579	Yes	
CK	Sillaotsa	601 818	6 520 081	70,0	2,0	40,0	34,8	577	Yes	
CL	Palsu	613 481	6 522 446	71,0	2,0	40,0	37,3	464	Yes	
CM	Peetri	606 152	6 522 180	70,0	2,0	40,0	38,2	252	Yes	
CN	Vändra	608 366	6 527 634	80,0	2,0	40,0	39,6	78	Yes	
CO	Aru (kokkuleppega)	612 937	6 525 966	79,0	2,0	45,0	39,8	538	Yes	
CP	Papli	602 240	6 512 716	70,0	2,0	40,0	37,6	317	Yes	
CQ	Magasi-Aida	602 253	6 512 726	70,0	2,0	40,0	37,5	329	Yes	

To be continued on next page...

DECIBEL - Main Result

Calculation: lõuna_ala_30042024

...continued from previous page

Table with columns for WTG (1-3) and rows for NSA (X-CT). Each cell contains numerical values representing decibel levels for various wind directions and turbine configurations.

To be continued on next page...



DECIBEL - Main Result

Calculation: lõuna_ala_30042024

...continued from previous page

Table with columns labeled NSA and WTG, containing numerical data for various locations (CU to ED) across multiple wind turbine groups (1 to 3).

Table with columns labeled NSA and WTG, containing numerical data for various locations (A to AJ) across multiple wind turbine groups (3 to 8).

To be continued on next page...



DECIBEL - Main Result

Calculation: lõuna_ala_30042024

...continued from previous page

Table with 20 columns (NSA 3-8) and 20 rows (DH-ED) showing numerical data for WTG.

Table with 20 columns (NSA 8-19) and 20 rows (A-AW) showing numerical data for WTG.

To be continued on next page...



DECIBEL - Main Result

Calculation: lõuna_ala_30042024

...continued from previous page

Table with columns NSA, WTG, and 19 numerical columns representing different parameters or locations. Rows include letters from AX to DT.

To be continued on next page...



DECIBEL - Main Result

Calculation: lõuna_ala_30042024

...continued from previous page

Table with 19 columns (NSA 8-19) and 19 rows (DU-ED) showing numerical data for various locations.

Table with 12 columns (NSA 20-30) and 27 rows (A-BB) showing numerical data for various locations.

To be continued on next page...

DECIBEL - Main Result

Calculation: lõuna_ala_30042024

...continued from previous page

	WTG										
NSA	20	21	22	23	24	25	26	27	28	29	30
BC	5902	5007	5762	5115	6067	5406	4756	5207	4709	5764	6882
BD	16164	15647	16347	15601	16464	15668	15046	15213	14548	15828	16935
BE	16225	15741	16433	15681	16533	15731	15114	15262	14593	15877	16978
BF	15845	15363	16055	15302	16153	15352	14735	14883	14214	15498	16599
BG	16058	15571	16264	15513	16365	15564	14946	15097	14428	15712	16813
BH	16305	15799	16496	15749	16607	15810	15189	15349	14683	15964	17069
BI	10963	9922	10690	10121	11085	10475	9832	10307	9806	10858	11966
BJ	4092	2674	3358	3132	3978	3756	3329	4047	4023	4309	5132
BK	6660	6428	7031	6244	7010	6183	5604	5661	4982	6272	7355
BL	10510	9696	10447	9778	10716	10007	9355	9707	9121	10301	11436
BM	5288	5441	5895	5112	5701	4867	4398	4241	3565	4813	5800
BN	21788	21143	21873	21157	22056	21286	20649	20876	20226	21489	22612
BO	19980	19124	19884	19235	20179	19476	18825	19170	18571	19767	20902
BP	16275	15800	16490	15737	16585	15783	15167	15310	14641	15925	17024
BQ	14619	13784	14540	13881	14823	14116	13464	13810	13215	14406	15542
BR	10652	9589	10357	9800	10764	10168	9528	10017	9530	10561	11663
BS	3620	2228	2942	2658	3531	3269	2827	3545	3521	3817	4668
BT	16316	15831	16524	15772	16624	15823	15205	15354	14686	15969	17070
BU	3307	2259	2223	2762	2899	3349	3448	4002	4436	3822	3987
BV	16381	15893	16587	15835	16688	15887	15269	15419	14751	16034	17135
BW	4037	3057	2968	3549	3608	4117	4243	4781	5231	4570	4632
BX	6304	6118	6704	5915	6662	5832	5263	5298	4616	5907	6982
BY	16456	15725	16468	15775	16695	15952	15306	15589	14962	16197	17329
BZ	4600	5741	5664	5178	5048	4541	4613	3937	3738	4062	4281
CA	15882	15392	16086	15335	16188	15388	14770	14923	14255	15538	16640
CB	8932	8170	8911	8223	9152	8427	7777	8112	7520	8709	9844
CC	10958	9896	10664	10106	11070	10473	9832	10320	9829	10864	11967
CD	16345	15861	16554	15802	16653	15852	15235	15383	14714	15998	17099
CE	4007	2595	3287	3046	3900	3666	3233	3952	3924	4218	5049
CF	4137	2729	3424	3175	4034	3791	3349	4065	4022	4341	5180
CG	4019	2601	3286	3059	3905	3684	3259	3978	3960	4237	5059
CH	4115	5446	5199	4876	4511	4199	4453	3731	3765	3652	3530
CI	16234	15731	16428	15679	16537	15739	15119	15278	14611	15893	16997
CJ	16609	16120	16814	16063	16916	16116	15498	15648	14980	16263	17364
CK	10713	9671	10439	9870	10834	10225	9583	10060	9561	10610	11717
CL	4135	5304	5204	4738	4579	4092	4195	3506	3352	3602	3802
CM	5944	5048	5803	5156	6109	5447	4798	5248	4750	5806	6924
CN	3212	2026	2131	2564	2841	3191	3215	3814	4198	3697	3984
CO	2015	3433	2855	2976	2152	2429	3030	2521	3089	1974	966
CP	15630	15098	15801	15058	15925	15133	14509	14685	14023	15300	16411
CQ	15615	15083	15786	15043	15910	15118	14493	14669	14007	15284	16395
CR	16129	15636	16330	15580	16435	15635	15016	15170	14502	15785	16888
CS	3605	2153	2692	2701	3386	3376	3110	3823	3977	3939	4582
CT	7465	7296	7882	7093	7830	6998	6436	6448	5765	7053	8112
CU	7461	7281	7871	7082	7824	6993	6428	6447	5763	7052	8114
CV	12657	11920	12661	11968	12891	12152	11505	11803	11186	12408	13542
CW	14073	13537	14240	13497	14366	13575	12949	13131	12472	13747	14860
CX	16237	15743	16438	15688	16542	15743	15124	15278	14610	15893	16996
CY	20019	19162	19922	19273	20218	19515	18864	19209	18611	19807	20942
CZ	15923	15167	15913	15227	16153	15418	14770	15069	14449	15674	16809
DA	3663	2431	2584	2983	3298	3624	3610	4232	4586	4139	4443
DB	16386	15903	16595	15843	16694	15893	15276	15423	14754	16038	17139
DC	16328	15819	16517	15770	16629	15833	15211	15373	14708	15989	17094
DD	3647	2255	2969	2685	3558	3295	2853	3570	3544	3844	4695
DE	16391	15892	16588	15839	16695	15896	15277	15433	14766	16048	17151
DF	2944	4397	3882	3895	3162	3279	3807	3182	3614	2750	1967
DG	4004	3753	4338	3551	4331	3515	2918	3051	2402	3666	4786
DH	16492	16021	16711	15956	16803	16000	15385	15525	14855	16140	17238
DI	16456	15980	16671	15917	16766	15963	15347	15490	14821	16105	17204
DJ	16433	15962	16651	15897	16744	15940	15325	15466	14796	16081	17179
DK	6651	6409	7015	6230	6999	6173	5592	5655	4977	6266	7351
DL	15243	14698	15404	14664	15535	14745	14119	14303	13643	14918	16031
DM	15024	14452	15164	14429	15308	14525	13894	14094	13439	14709	15826
DN	4098	5251	5164	4687	4546	4044	4135	3450	3282	3561	3789
DO	16217	15699	16399	15653	16516	15721	15098	15265	14601	15881	16988

To be continued on next page...

Project: Järva_tuulikud
Description: 25 m arvutusvõrk

Licensed user:
Lemma OÜ
Värvi 5 - A308
EE-10621 Tallinn
+3725059914
Piret Toonpere / piret@lemma.ee
Calculated:
30.04.2024 10:15/4.0.540

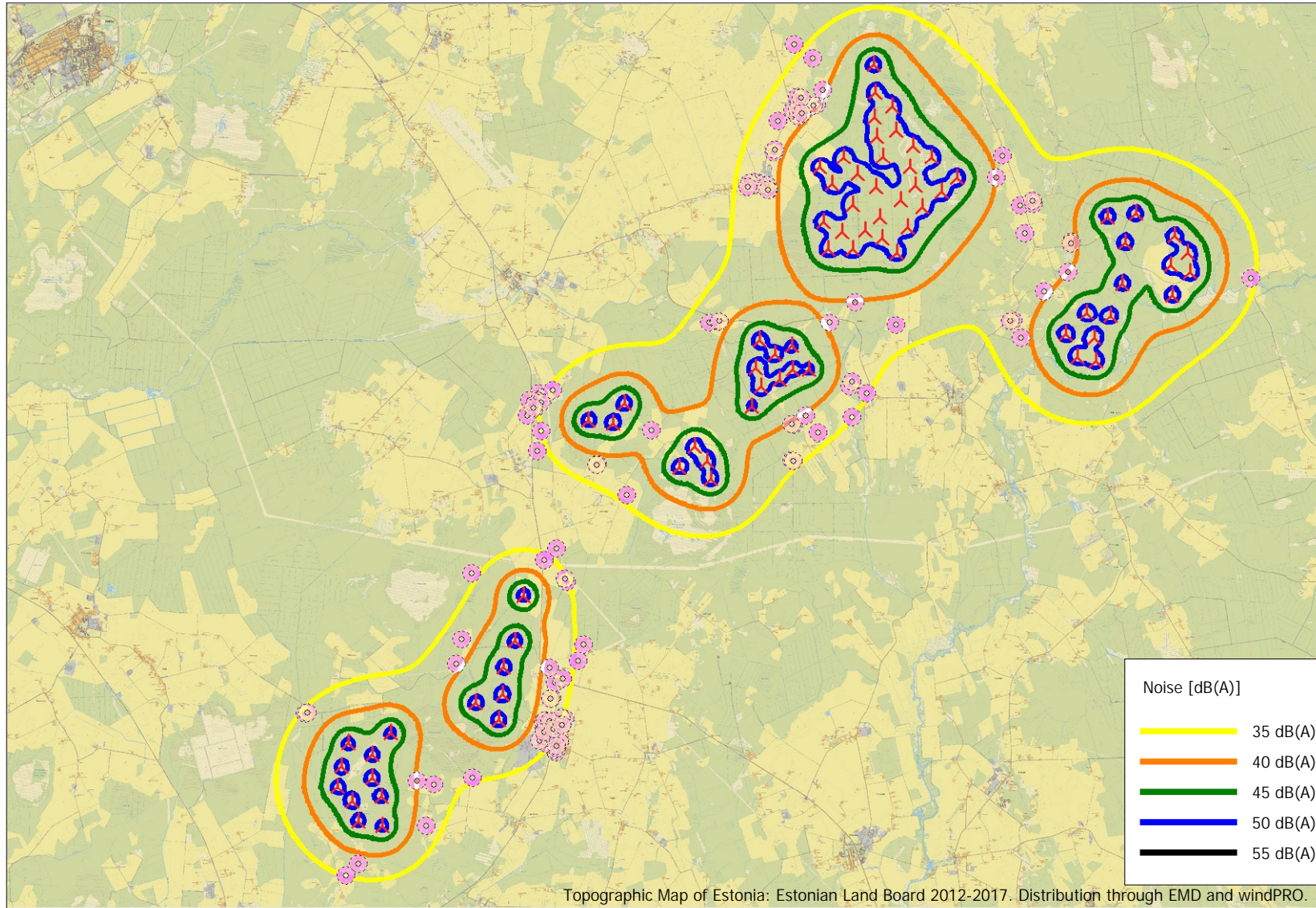
DECIBEL - Main Result

Calculation: lõuna_ala_30042024

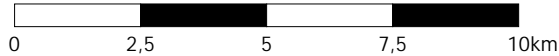
...continued from previous page

	WTG										
NSA	20	21	22	23	24	25	26	27	28	29	30
DP	11092	10109	10875	10277	11237	10597	9949	10392	9864	10957	12076
DQ	16529	16060	16749	15994	16840	16036	15422	15561	14891	16176	17273
DR	15049	14516	15219	14476	15344	14552	13927	14105	13444	14720	15832
DS	16223	15709	16409	15662	16524	15728	15106	15271	14606	15886	16993
DT	13064	12395	13124	12412	13318	12560	11918	12177	11543	12787	13917
DU	16109	15602	16300	15552	16411	15614	14993	15154	14488	15769	16875
DV	3915	2500	3190	2954	3804	3577	3151	3870	3853	4130	4956
DW	10516	9835	10564	9854	10763	10011	9367	9645	9021	10252	11385
DX	19265	18615	19344	18629	19530	18763	18125	18358	17712	18971	20096
DY	11462	10513	11278	10664	11621	10965	10315	10737	10193	11310	12435
DZ	3564	2259	2505	2824	3229	3482	3416	4063	4379	4014	4399
EA	16416	15949	16637	15882	16728	15924	15309	15449	14778	16063	17160
EB	16193	15701	16396	15645	16499	15699	15080	15233	14565	15848	16950
EC	10910	9872	10641	10069	11033	10421	9778	10251	9749	10803	11912
ED	22214	21565	22295	21581	22480	21711	21074	21302	20653	21916	23039

Project:
 Järva_tuulikud
 Description:
 25 m arvutusvõrk



Topographic Map of Estonia: Estonian Land Board 2012-2017. Distribution through EMD and windPRO.



Map: Estonian Topographic Map , Print scale 1:150 000, Map center Estonian Lambert L-EST97-EST97 (EE) East: 605 133 North: 6 519 180

New WTG

Noise sensitive area

Noise calculation model: ISO 9613-2 General. Wind speed: 10,0 m/s
 Height above sea level from active line object

Noise [dB(A)]	
	35 dB(A)
	40 dB(A)
	45 dB(A)
	50 dB(A)
	55 dB(A)

DECIBEL -
 Map 10,0 m/s
 Calculation:
 lõuna_ala_30042024

Licensed user:
 Lemma OÜ
 Värvi 5 - A308
 EE-10621 Tallinn
 +3725059914
 Piret Toonpere / piret@lemma.ee
 Calculated:
 30.04.2024 10:15/4.0.540